





CONTROLLED PARKING ZONE - B

KEY

-  **PROPOSED UNLIMITED FREE PARKING MONDAY-FRIDAY 08.00-18.00**
-  **PROPOSED NO WAITING MONDAY-FRIDAY 08.00-18.00**
-  **REVOCAION OF EXISTING WAITING, LOADING AND PARKING RESTRICTIONS (NOT VISIBLE IF UNDER PROPOSALS)**
-  **EXISTING WAITING, LOADING AND PARKING RESTRICTIONS (WITH OR WITHOUT SYMBOLS)**

Notes

Rev.	Description	Drwn	Sig.	Date	Chkd	Sig.	Date	Appr	Sig.	Date
A	SYMBOLS ADDED TO RESTRICTIONS	SDC	SDC	23.01.08	TPC	TPC	23.01.08	TPC	TPC	23.01.08
B	RESTRICTIONS AMENDED	CAH	CAH	OCT 09	JAR	JAR	OCT 09	TPC	TPC	OCT 09
C	RESTRICTIONS AMENDED	CAH	CAH	09.11	JAR	JAR	09.11	TPC	TPC	09.11

North Point

Based upon the Ordnance Survey mapping with the permission of the Controller of Her Majesty's Stationery Office. Crown copyright. Unauthorised reproduction infringes Crown copyright and may lead to prosecution or civil proceedings. Surrey County Council LA 076872 1996.

Drawn by	Sig.	Date
SDC	SDC	03.07
Checked by	Sig.	Date
TPC	TPC	03.07
Approved by	Sig.	Date
TPC	TPC	03.07

Project: WAYERLEY DPE FARNHAM

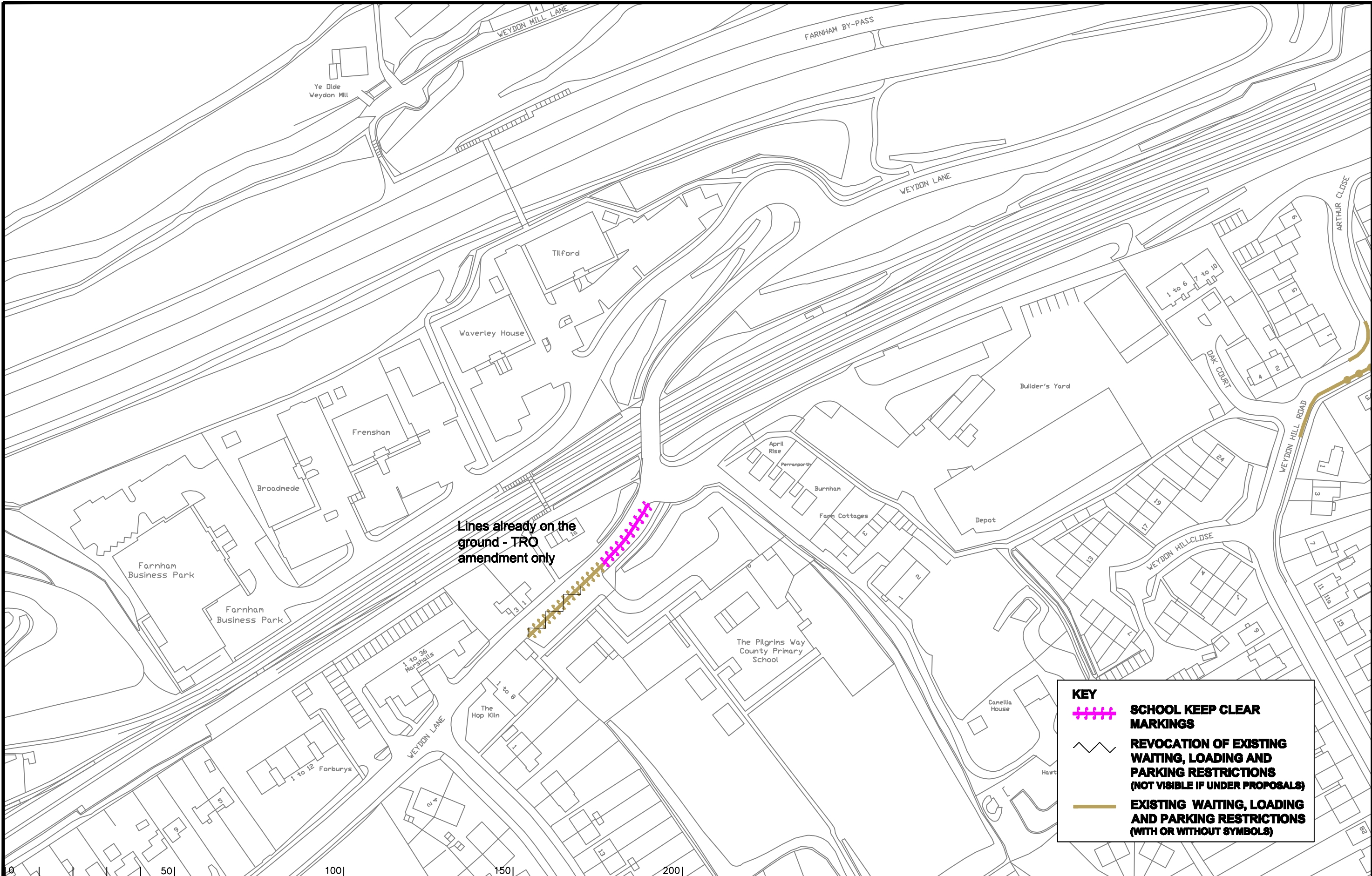
Implemented Traffic Orders

SHEET OF



SURREY COUNTY COUNCIL
Sustainable Development

Project No. 3282/WAV
Contract Sheet No. 24.033
Rev. C
Classification: ADVERTISED



Lines already on the ground - TRO amendment only

KEY

- SCHOOL KEEP CLEAR MARKINGS**
- REVOCAION OF EXISTING WAITING, LOADING AND PARKING RESTRICTIONS (NOT VISIBLE IF UNDER PROPOSALS)**
- EXISTING WAITING, LOADING AND PARKING RESTRICTIONS (WITH OR WITHOUT SYMBOLS)**

Notes

Rev.	Description	Drwn	Sig.	Date	Chkd	Sig.	Date	Appr	Sig.	Date
A	RESTRICTIONS AMENDED	CAH	CAH	OCT 09	JAR	JAR	OCT 09	TPC	TPC	OCT 09
B	RESTRICTIONS AMENDED TO MATCH EXISTING MARKINGS	CAH	CAH	09.11	JAR	JAR	09.11	TPC	TPC	09.11

Drwn	Sig.	Date	Chkd	Sig.	Date	Appr	Sig.	Date
CAH	CAH	OCT 09	JAR	JAR	OCT 09	TPC	TPC	OCT 09
CAH	CAH	09.11	JAR	JAR	09.11	TPC	TPC	09.11

North Point

Based upon the Ordnance Survey mapping with the permission of the Controller of Her Majesty's Stationery Office. Crown copyright. Unauthorised reproduction infringes Crown copyright and may lead to prosecution or civil proceedings. Surrey County Council LA 076872 1996.

Drawn by	Sig.	Date
SDC	SDC	03.07

Checked by	Sig.	Date
TPC	TPC	03.07

Approved by	Sig.	Date
TPC	TPC	03.07

Project

**WAVERLEY DPE
FARNHAM**

Drawing

IMPLEMENTED TRAFFIC ORDERS

SHEET OF

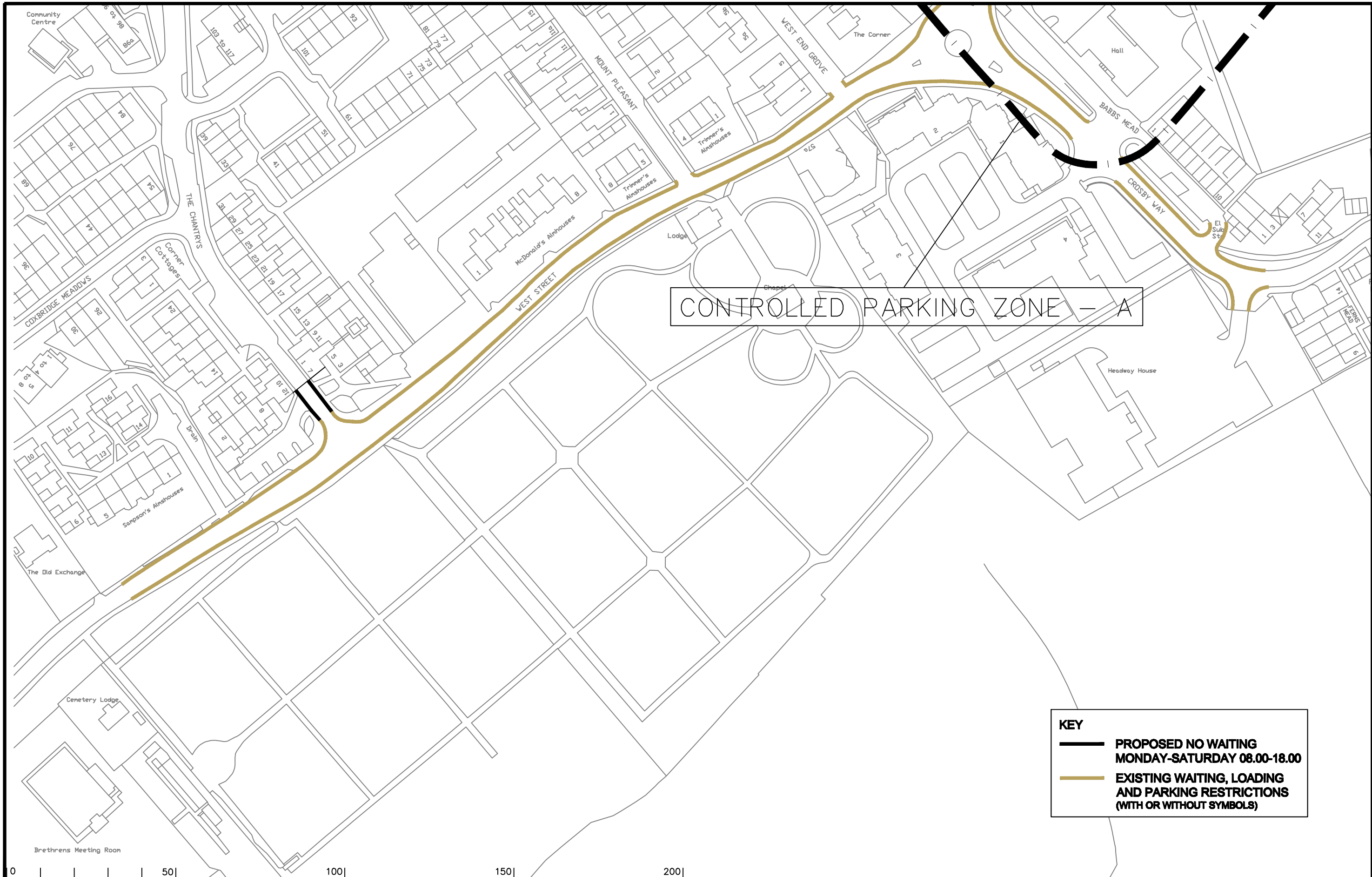
SURREY COUNTY COUNCIL
Sustainable Development

Project No. 3282/WAV

Contract Sheet No. 24.032

Revision B


Classification: ADVERTISED

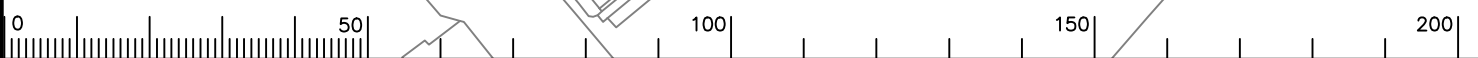


CONTROLLED PARKING ZONE – A

KEY

 **PROPOSED NO WAITING MONDAY-SATURDAY 08.00-18.00**

 **EXISTING WAITING, LOADING AND PARKING RESTRICTIONS (WITH OR WITHOUT SYMBOLS)**



Notes

Rev.	Description	Drwn	Sig.	Date	Chkd	Sig.	Date	Appr	Sig.	Date
A	SYMBOLS ADDED TO RESTRICTIONS	SDC	SDC	23.01.08	TPC	TPC	23.01.08	TPC	TPC	23.01.08
B	RESTRICTIONS AMENDED	CAH	CAH	09.11	JAR	JAR	09.11	TPC	TPC	09.11

Drwn	Sig.	Date	Chkd	Sig.	Date	Appr	Sig.	Date
SDC	SDC	23.01.08	TPC	TPC	23.01.08	TPC	TPC	23.01.08
CAH	CAH	09.11	JAR	JAR	09.11	TPC	TPC	09.11

North Point

Based upon the Ordnance Survey mapping with the permission of the Controller of Her Majesty's Stationery Office © Crown copyright. Unauthorised reproduction infringes Crown copyright and may lead to prosecution or civil proceedings. Surrey County Council LA 076872 1996.

Drawn by	SDC	Sig.	SDC	Date	03.07
Checked by	TPC	Sig.	TPC	Date	03.07
Approved by	TPC	Sig.	TPC	Date	03.07

Project
WAVERLEY DPE FARNHAM

Drawing
IMPLEMENTED TRAFFIC ORDERS

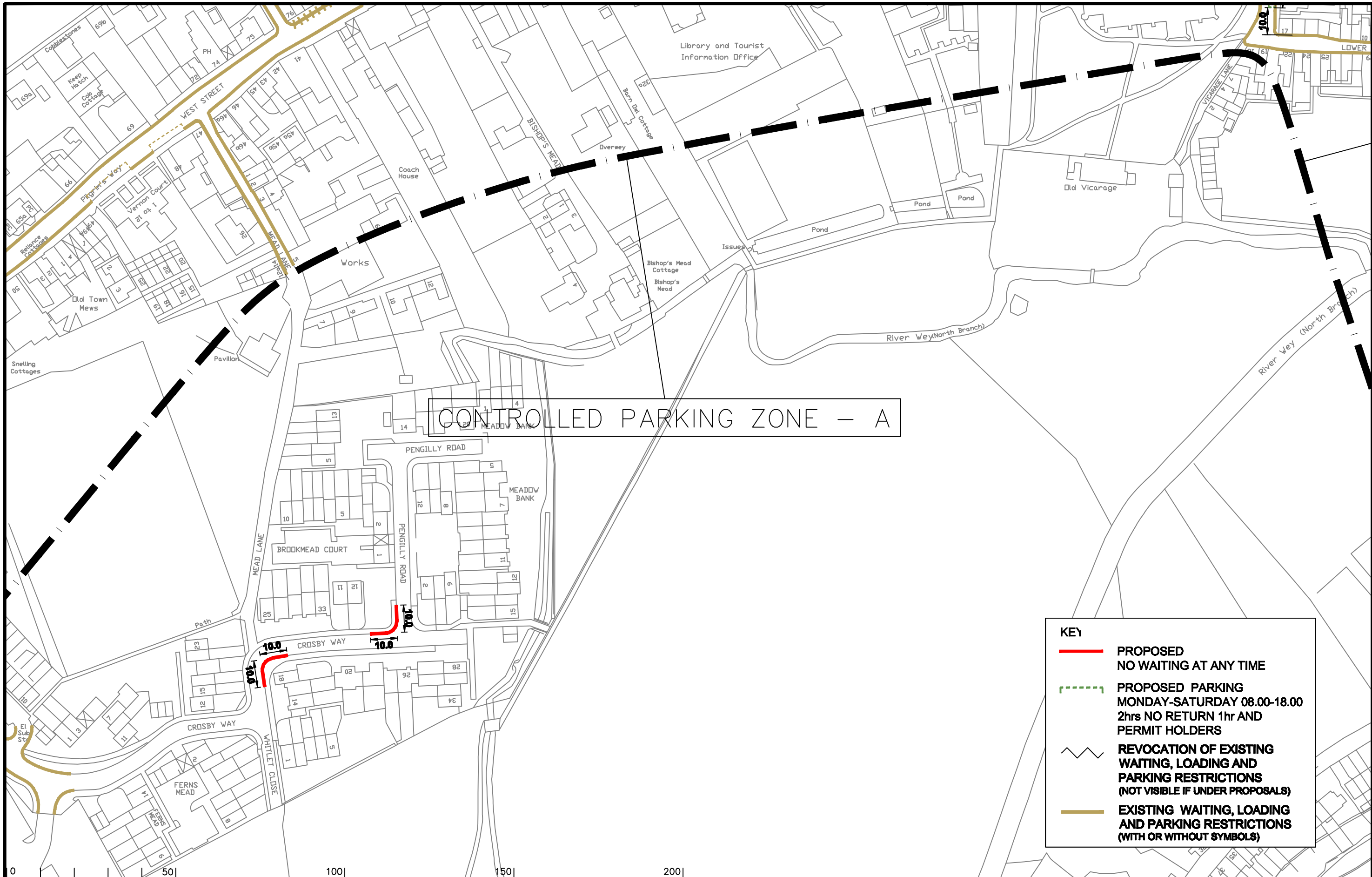
SHEET OF

SURREY COUNTY COUNCIL
Sustainable Development

Project No. **3282/WAV**

Contract Sheet No. **24.031** Rev. **B**

Classification
ADVERTISED



CONTROLLED PARKING ZONE - A

KEY

- PROPOSED NO WAITING AT ANY TIME**
- PROPOSED PARKING MONDAY-SATURDAY 08.00-18.00 2hrs NO RETURN 1hr AND PERMIT HOLDERS**
- REVOCAION OF EXISTING WAITING, LOADING AND PARKING RESTRICTIONS (NOT VISIBLE IF UNDER PROPOSALS)**
- EXISTING WAITING, LOADING AND PARKING RESTRICTIONS (WITH OR WITHOUT SYMBOLS)**



Notes

Rev.	Description	Drwn	Sig.	Date	Chkd	Sig.	Date	Appr	Sig.	Date
A	SYMBOLS ADDED TO RESTRICTIONS	SDC	SDC	23.01.08	TPC	TPC	23.01.08	TPC	TPC	23.01.08
B	RESTRICTIONS AMENDED	CAH	CAH	09.11	JAR	JAR	09.11	TPC	TPC	09.11

Drwn	Sig.	Date	Chkd	Sig.	Date	Appr	Sig.	Date
SDC	SDC	23.01.08	TPC	TPC	23.01.08	TPC	TPC	23.01.08
CAH	CAH	09.11	JAR	JAR	09.11	TPC	TPC	09.11

North Point

Based upon the Ordnance Survey mapping with the permission of the Controller of Her Majesty's Stationery Office. Crown copyright. Unauthorised reproduction infringes Crown copyright and may lead to prosecution or civil proceedings. Surrey County Council LA 076872 1996.

Drawn by	SDC	Sig.	SDC	Date	03.07
Checked by	TPC	Sig.	TPC	Date	03.07
Approved by	TPC	Sig.	TPC	Date	03.07

Project
WAVERLEY DPE FARNHAM

Drawing
IMPLEMENTED TRAFFIC ORDERS

SHEET OF

SURREY COUNTY COUNCIL
Sustainable Development

Project No.	3282/WAV
Contract Sheet No.	
Drawing No.	24.027
Rev.	B
Classification	ADVERTISED